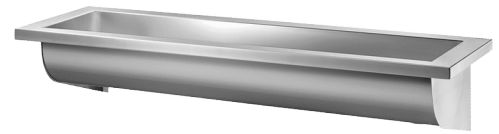


CANAL wall-mounted wash trough

Ref. 120280

Polished satin 304 stainless steel - L. 1800mm



DESCRIPTION

CANAL wall-mounted wash trough - Ref. 120280

Wall-mounted wash trough for wall-mounting, for 3-4 services - L. 1,800mm
 Bacteriostatic 304 stainless steel.
 Polished satin finish.
 Stainless steel thickness: 0.8mm for the bowl, 1.5mm for surround and fixing brackets.
 Easy to install: no joint concealers to install, lightweight trough.
 Water control can be wall-mounted or deck-mounted.
 Drainage on the right.
 Without tap hole.
 Supplied with 1½" waste. Without overflow.
 Supplied with fixing elements.
 CE marked. Complies with European standard EN 14296.
 Weight: 10.3kg.
 30-year warranty.

Possible to add a bacteriostatic 304 stainless steel splashback (ref. 100280).
 [Formerly ref: 0211280015]

TECHNICAL CHARACTERISTICS

CANAL wall-mounted wash trough - Ref. 120280

Height	250mm
Length	1800mm
Width	400mm
Thickness	1mm (cuve) and 1.5mm (edge and brackets)
Finish	304 polished satin stainless steel
Norms	
Warranty	

ADVANTAGES



Bacteriostatic 304 stainless steel, smooth surface

